

23 Boho Dining Rooms That Are Eclectic and Eccentric

By KRISTIN HOHENADEL | Published on 08/24/23



Design by [Leanne Ford Interiors](#) / Photo by [Reid Rolls](#)

Like the free-spirited bohemian interiors of times past, the best contemporary boho-style dining rooms are eclectic and eccentric. Today there are many variations on boho design, from minimalist interiors with white walls, woven accents, and plants to maximalist, colorful spaces full of global accents and a mix of vintage and antique decor touches that feel collected over time.

Check out these chic boho-style dining rooms in a range of settings to inspire you.

01 Mix Wood and Woven Details

of 23



Design by [Leanne Ford Interiors](#) / Photo by [Reid Rolls](#)

Decorating a formal dining room with boho-style touches will make it feel casual and inviting. Leaf and Lolo outfitted this sunny dining room with wood and woven furniture and accessories like a macrame table runner and tiered textile pendant light to give it a light and airy feel.

02 Hang a Gallery Wall

of 23



Ryann Miller For Emily Henderson Design / Photo by Sara Ligorria-Tramp

An eclectic gallery wall will lend a boho-style feel to any size dining room. This small space from Ryann Miller for Emily Henderson Design has dark teal walls that serve as a backdrop for a mix of vintage paintings, prints, and photography in a range of sizes and black and gold frames that create a sense of history. The table is decorated with sunflowers, a bowl of fruit, and taper candles to create a cozy atmosphere.

03 Hang a Tasseled Pendant

of 23



deVOL Kitchens

You can add boho-style spirit to any style room. This English country eat-in kitchen dining area from deVOL Kitchens includes a round table covered with layered vintage tablecloths, anchored by a retro tasseled pendant light hung low over the table. It blends seamlessly into the open, airy space with its vintage and antique touches, Shaker cabinets, exposed beams, and painted shiplap walls and ceiling.

04 Fill Baskets With Plants

of 23



Design by [Leanne Ford Interiors](#) / Photo by [Reid Rolls](#)

Add boho-style flair to a dining room with woven accessories like sculptural pendant lights and baskets. Leanne Ford Interiors styled the corners of this dining room with sculptural woven baskets, vases, and vessels of varying heights and shapes that are filled with a mix of plants. Exposed wood beams, painted white brick, white floors with neutral layered rugs, a wood table, and painted woven dining chairs and pendant lights give the space a modern boho-style feel.

05 Go Bold With Color

of 23



Design by [Truss Interiors](#) / [Jeff Morris Photography](#)

Embracing bold color can help to create a bohemian feel in a formal dining room. Truss Interiors decorated this elegant boho-style dining room in shades of blue and gold. Deep blue walls are echoed by a navy area rug beneath the table, while an antique gold-framed mirror and light blue decorative accents complement a vintage dining table and chairs upholstered in gold velvet.

06 Choose Mismatched Seating

of 23



 Fantastic Frank

Something as simple as choosing mismatched seating will lend your dining room a free-spirited boho-style feel. You can mix styles and colors, choose different styles in a single color palette such as white or black, or mix and match pairs of chairs that you can shuffle around the table to suit your mood. A jumble of colorful mismatched chairs makes this dining room from Fantastic Frank feel playful and inviting, complementing the antique chandelier and wall decor.

07 Incorporate Antiques

of 23



 Ashley Montgomery Design

You can add a boho design sensibility into a modern space by mixing styles and periods to create a look that feels collected over time. Ashley Montgomery Design embellished the dining area of this open-plan space with an antique chandelier and a cuckoo clock on the wall that adds contrast with the dark wood table and chairs and cow hide rug.

08 Hang Patterned Wallpaper

of 23



Design by [Living with Lolo](#) / Photo by [Life Created](#)

Give a modern dining room a dose of boho design with colorful patterned wallpaper. This dining room from [Living with Lolo](#) mixes beige wood furniture with dynamic patterned walls in shades of blue and white. Dark paint on the ceiling and matching drapes add contrast.

09 Mix in Vintage Decor

of 23



Design by [Emilie Fournet Interiors](#) / Photo by [Kasia Fiszer](#)

Adding vintage decor and furniture can add a boho-style feel to modern spaces. [Emilie Fournet Interiors](#) paired a Danish modern table and chairs with a midcentury modern pendant light and added decor touches like a trio of framed vintage prints and a rattan wine rack to this London dining room that gives the casual space a boho-style feel.

10 Hang an Airy Woven Pendant

of 23



Design by [Leanne Ford Interiors](#) / Photo by [Reid Rolls](#)

Hang an oversized woven pendant light above the table to create a striking focal point with an airy feel in your boho-style dining room. Leanne Ford Interiors added a patterned area rug to define the space against immaculate white walls and matching floors.

11 Stick to Black and White

of 23



[Blanco Bungalow](#)

For a boho-style dining room that will stand the test of time, stick to shades of black and white. Blanco Bungalow decorated this simple dining room with a dark wood table and chairs, a graphic Moroccan rug, plants, and minimal decor in shades of black and white for a timeless feel.

12 Add Color and Pattern

of 23



 Mary Patton Design

Mix color and pattern to create a boho design sensibility that will make a formal dining room feel playful and one of a kind. Mary Patton Design paired blush pink walls with dark green patterned curtains, then hung an oversized pendant light over the dining table styled with a vintage soup tureen and a set of multi-colored candleholders to create a breezy boho-style feel.

13 Create a Bookshelf Wall

of 23



 Marie Flanigan Interiors

Turn your dining room into an off-duty home library by installing a wall of bookshelves to display your collection and display objects and art for an eclectic boho-style feel. This spacious dining room from Marie Flanigan Interiors has floor-to-ceiling bookcases that are filled to the brim, a large wrought iron pendant light over the rustic dining table styled with green glass demijohns, and a neon sign on the wall for a cheeky touch.

14 Choose a Light Palette

of 23



Mary Patton Design

Create a modern boho-style feel by sticking to a light palette and minimalist decor. This Scandinavian apartment dining corner from Fantastic Frank mixes pale wood tones with soft shades of blue and green for a soothing and understated feel. A simple vase of preserved flowers adds warmth.

15 Play With Proportions

of 23



Marie Flanigan Interiors

Adding an oversized rice paper light above the dining room will add warmth and a sculptural element to a boho-style dining room that doesn't detract from other decor elements. Leanne Ford Interiors hung a large round pendant over the dark wood dining table and woven chairs of this white-walled dining room that has presence but a light profile, allowing art and objects to stand out.

16 Line the Sills With Plants

of 23



📷 Mary Patton Design

Line the wrap-around windowsills of a sunroom-turned-dining room with plants to make your dining room feel full of life even when not in use. This Swedish country house dining room from Fantastic Frank has a mix of vintage and antique furniture, patterned red textiles, dark floors, and a trio of industrial pendants hung over the long dining table for an eclectic boho-style mix.

17 Try a Macrame Wall Hanging

of 23



📷 Marie Flanigan Interiors

You can add a nod to boho style in a dining room with simple iconic pieces like a macrame wall hanging. This warm dining room from Dazey Den has a mix of neutral tones, gold accents, peach tones, and a large retro-style macrame wall hanging that brings the boho-style vibes.

18 Add Personal Touches

of 23



📷 Fantastic Frank

You don't have to embrace maximalism to create an eclectic feel in your boho-style dining room. This neutral Scandinavian space from Fantastic Frank is punctuated with colorful art and a mix of furniture and lighting that creates a modern boho-style aesthetic with a light and airy feel.

19 Mix in Midcentury Decor

of 23



📷 Design by Emilie Fournet Interiors / Photo by Kasia Fiszer

Modern boho design often features midcentury pieces. This London dining room from Emilie Fournet Interiors is decorated with a mix of midcentury pieces from the table and pastel 1950s kitchen sideboard to the wooden bar cart. Leaf print upholstery on the chairs, plants, and a vase of dried grasses on the floor add casual nostalgic vibes.

20 Try Trailing Plants

of 23



Design by Emilie Fournet Interiors / Photo by Caitlin Mogridge

Plants are an essential element for modern boho-style interiors. In this London dining room from Emilie Fournet Interiors, a colorful geometric rug, a mix of colored glass pendant lights, a Danish modern dining table and chairs, and vintage seating are complemented by trailing plants perched on a high windowsill that add an effortless feel and bring some of the outdoors inside.

21 Embrace Maximalism

of 23



Casa Watkins Living

Fans of maximalism gravitate toward boho-style interiors that highlight collections and offer endless styling opportunities. This modern boho-style dining room from Casa Watkins Living has painted and natural wood furniture, soft blue walls, and a mix of colorful global accessories on the table and wall that can be styled and styled again.

22 Cover the Walls in Art

of 23

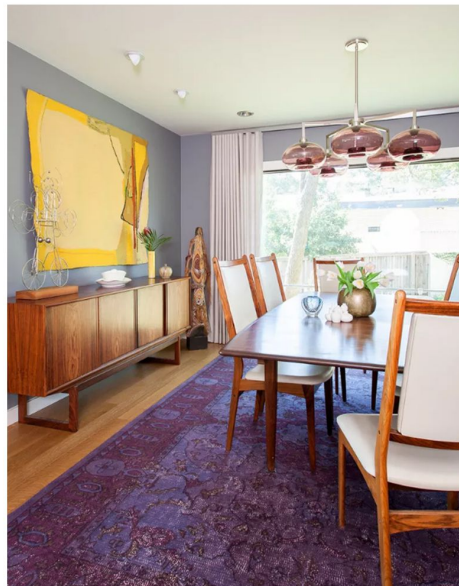


K Shan Design

Turn every wall into a gallery wall to create a warm boho-style dining room. This space from K Shan Design includes framed art that extends to the bottom half of the walls for an immersive and nonchalant feel. Vintage seating and a scalloped jute rug enhance the relaxed boho-style look.

23 Energize With Color

of 23



Erin Williamson Design

Mix polished midcentury pieces with colorful art, textiles, and lighting to create an elevated boho feel with vintage vibes. Erin Williamson Design added a bright yellow painting and a vibrant overdyed purple vintage rug to energize this dining space and add contrast with the classic midcentury modern furniture and lighting.